

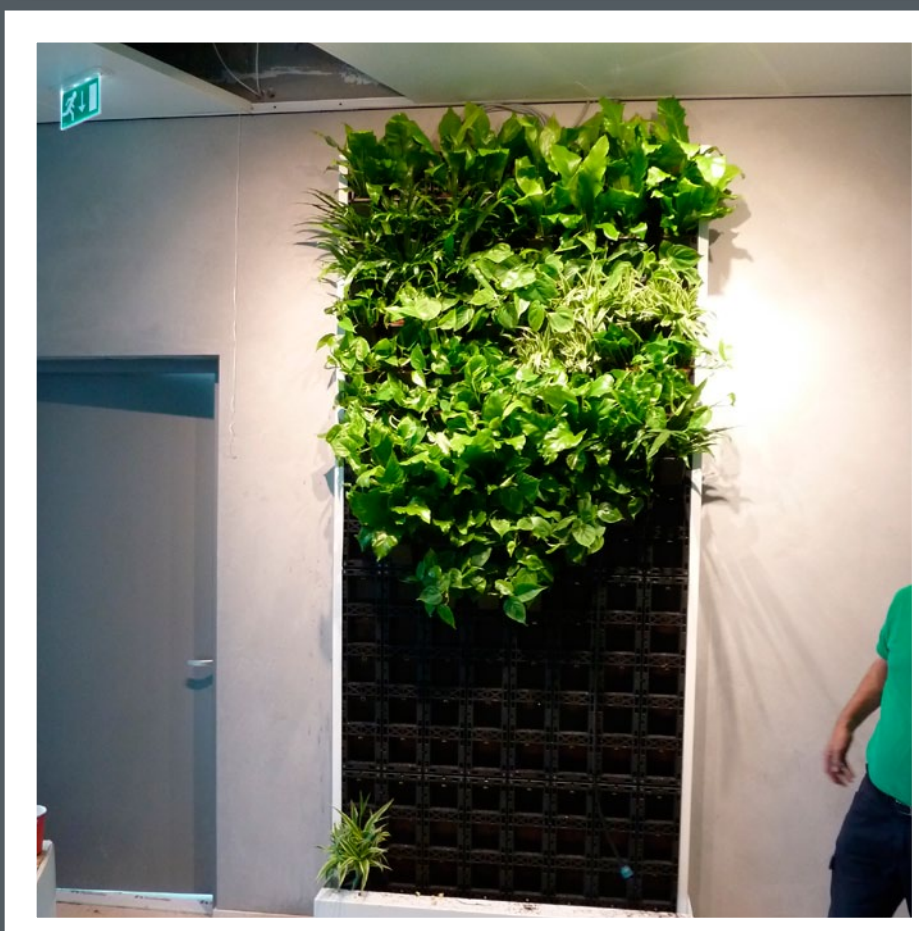
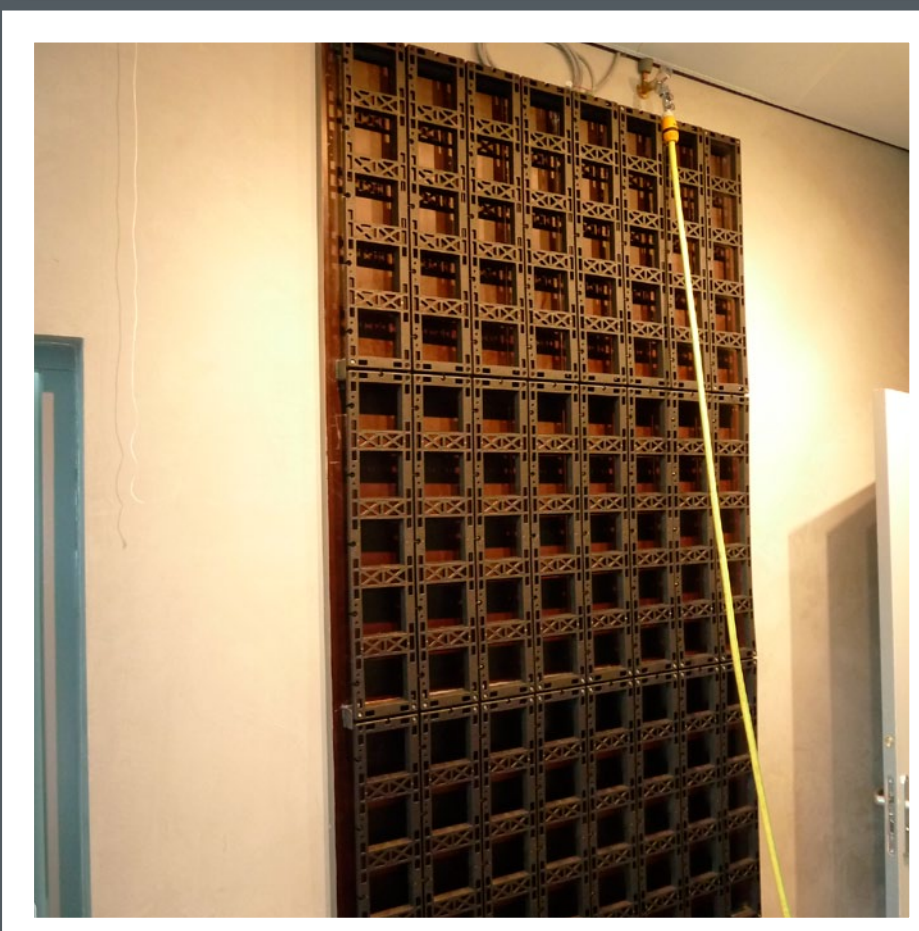
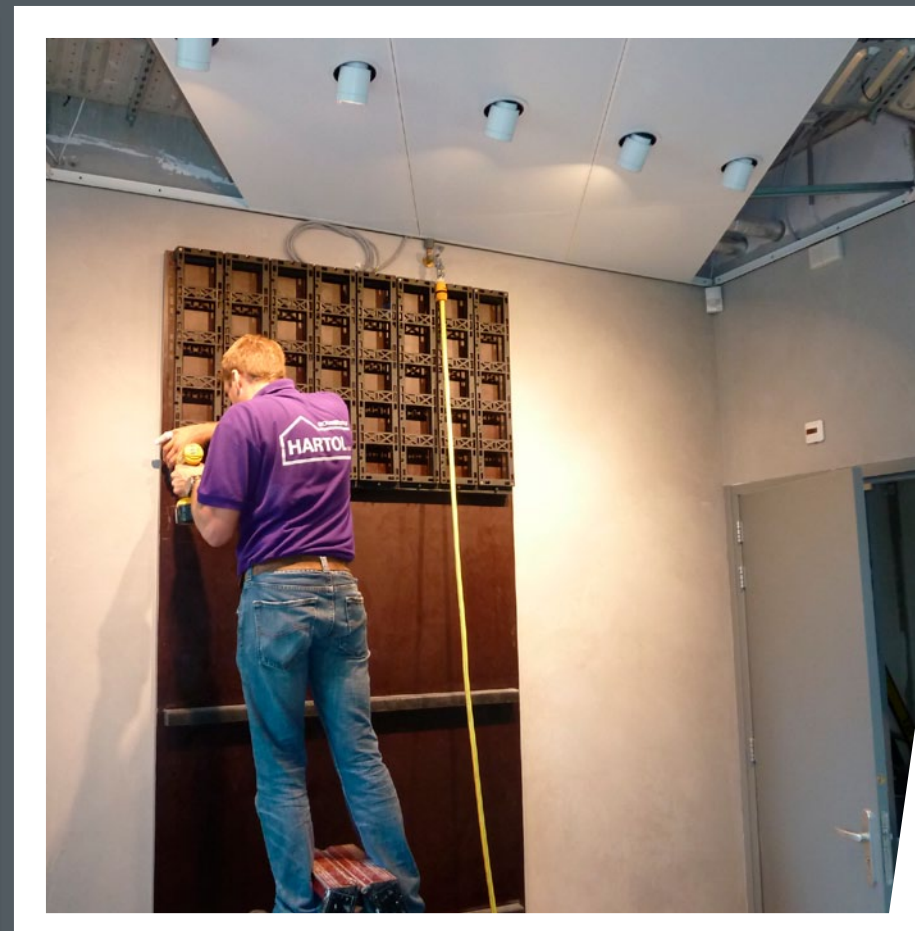
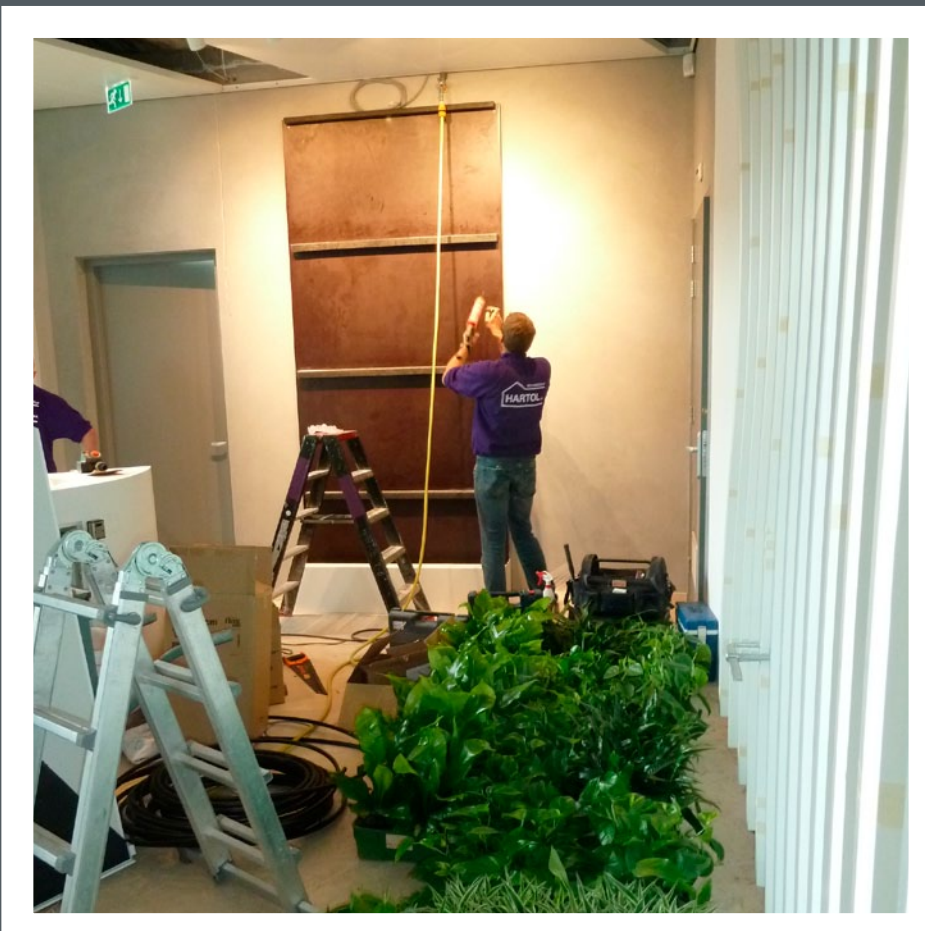


Bin Fen Green Wall System

BESPOKE system



MODULAR system





Bin Fen Green Wall System

BESPOKE

The planters in this system are moulded with hooks on the back. The compost and water are separated by a water absorbent membrane. Each planter has a facility for automatic Irrigation to be used. The planters are attached to the side of a wall using weldmesh 50 X 50 X 3mm And a support frame on the wall. A separate waterproof barrier should not be required. Our BESPOKE System leaves a useful air gap. Using automatic irrigation enables the Bin Fen system to function without wasting water. Each plant is growing in its own planter with its own water supply, this also means each plants particular soil requirements can be catered for, which gives the designer full control over the selection of plants For colour shape and size as well as flowering times, plants can also be easily changed.

MODULAR

The unique design is easy to understand. The basic element consists of a frame with 5 openings, into which you place a specially designed flower pot. Each flower pot can be automatically irrigated. The frames are fitted with a ball and socket and can therefore be connected to each other as a ball joint. These flexible connections can be used to create freestanding, decorative walls or objects. This system can also be used to attach the frames to carriers on a wall, enabling the carriers to be attached very precisely to the wall. No separate waterproof barrier layer is required. Due to the automatic irrigation, the Bin Fen Green Wall System does not waste any water. Each plant grows in its own flower pot with its own water supply. If necessary, a plant can also be given special feed or soil. The garden architect is thus free in his/her choice of plants. Furthermore, the plants can easily be changed once they have finished flowering or when new colours, shapes and/or sizes are required.

